

MM 25-30 Stand Off Insulator

Manufacturing Process : TRANSFER MOLDING



Proudly made in the
USA



Inserts : Nickel Plated carbon steel or AISI 316 Stainless steel are standard. Other materials on request.

Dimensions	
Height	25 ± 0.25mm
Diameter	30mm
Distance Across Flats	28mm
Creepage	30 mm
Mechanical Characteristics	
Tensile Strength	≥ 650 daN
End Flexural Strength	≥ 160 daN
Compressive Strength	≥ 2500 daN
Torsion	> 30 N.m
Electrical Characteristics	
Arc Over Voltage in Air	≥ 18 kV
Breakdown Voltage in Air	≥ 20 kV
Insulation Resistance at 1000 V	≥ 200 GΩ
Capacitance	5.1 pF
Test Conditions	
Withstand Voltage	16 kV
Frequency	60 Hz
Duration	1 minute



CRYSTEX COMPOSITES LLC
MYCALEX Insulators
125 Clifton Boulevard, Clifton NJ, 07011
Phone: 973-779-8866 Fax: 973-779-2013 www.crystexcomposites.com



MM 25-30 Stand Off Insulator

Creepage 30mm

Weight 0.05 Kg

MATERIAL : MYCALEX MM 451 Glass Mica Ceramic

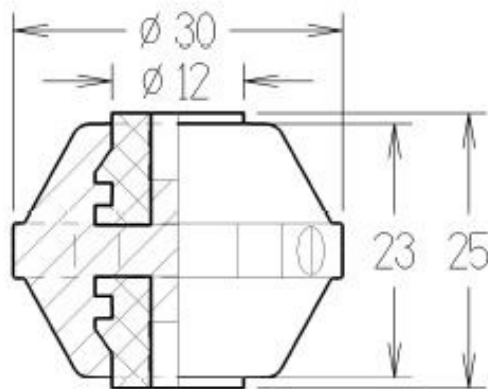
RoHS compliant (Pb Free)

CTI > 600

Mycalex Insulators are made from inorganic materials that do not burn. Compliant to EN 45545-2, NF F16-101 and NF-F-102

Operating Temperature : -50 to 450°C

Manufacturing Process : TRANSFER MOLDING



Inserts : Nickel Plated carbon steel or AISI 316 Stainless steel are standard. Other materials on request.

Description	Insert Material	THREAD	PITCH mm	CRYTEX PART
MM25-30-M6-D	NPS	M6	1.00	45-0451-0229 47-0451-0229S
	AISI 316			
MM25-30-M8	NPS	M8	1.25	
	AISI 316			



Rev

4

MM 25-30 Stand Off Insulator

Creepage 30mm

Weight 0.05 Kg

MATERIAL : MYCALEX MM 451 Glass Mica Ceramic

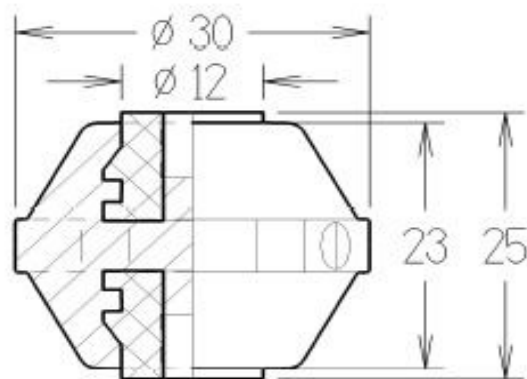
RoHS compliant (Pb Free)

CTI > 600

Mycalex Insulators are made from inorganic materials that do not burn. Compliant

Operating Temperature : -50 to 450°C

Manufacturing Process : TRANSFER MOLDING



Inserts : Nickel Plated carbon steel or AISI 316 Stainless steel are

Type	Insert	Dia	Thread	Pitch
A	1 Male	6mm	M6	1.05
	1 Male	6mm	M6	1.05
B	1 Male	8mm	M8	1.25
	1 Male	8mm	M8	1.25
C	1 Male	8mm	M8	1.25
	1 Male	8mm	M8	1.25
D	1 Female	6mm	M6	1.05
	1 Male	6mm	M6	1.05



Rev

4