

MM 60-75 Stand Off Insulator

Manufacturing Process : TRANSFER MOLDING



Proudly made in the
USA



Inserts : Nickel Plated carbon steel or AISI 316 Stainless steel are standard. Other materials on request.

Dimensions	
Height	60 ± 0.25mm
Diameter	60 mm
Distance Across Flats	55mm
Creepage	75 mm
Mechanical Characteristics	
Tensile Strength	≥ 2000daN
End Flexural Strength	≥ 650daN
Compressive Strength	≥6000daN
Torsion (M10, M14, M16)	>60, 110,140 N.m
Electrical Characteristics	
Arc Over Voltage in Air	≥ 30 kV
Breakdown Voltage in Air	≥ 35 kV
Insulation Resistance at 1000 V	≥ 200 GΩ
Capacitance	7.5 pF
Test Conditions	
Withstand Voltage	27 kV
Frequency	60 Hz
Duration	1 minute



CRYSTEX COMPOSITES LLC
MYCALEX Insulators

125 Clifton Boulevard, Clifton NJ. 07011

Phone: 973-779-8866 Fax: 973-779-2013 www.crystexcomposites.com



MM 60-75 Stand Off Insulator

Creepage 75mm

Weight 0.33 Kg

MATERIAL : MYCALEX MM 451 Glass Mica Ceramic

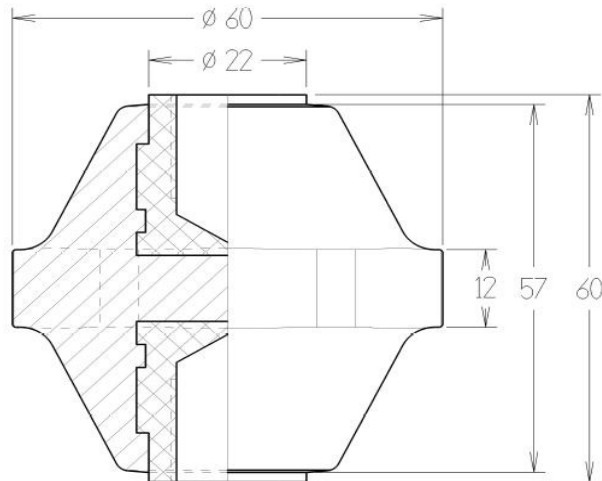
RoHS compliant (Pb Free)

CTI > 600

Mycalex Insulators are made from inorganic materials that do not burn. Compliant to EN 45545-2, NF F16-101 and NF-F-102

Operating Temperature : -50 to 450°C

Manufacturing Process : TRANSFER MOLDING



Inserts : Nickel Plated carbon steel or AISI 316 Stainless steel are standard. Other materials on request.

Description	Insert Material	THREAD	PITCH mm	CRYSTEX PART
MM60-75-M10	NPS	M 10	1.50	45-0451-0192
	AISI 316			47-0451-0192-S
MM60-75-M12	NPS	M 12	1.75	45-0451-0191
	AISI 316			47-0451-0191-S
MM60-75-M14	NPS	M 14	2.00	45-0451-0189
	AISI 316			47-0451-0189-S
MM60-75-M16	NPS	M 16	2.00	45-0451-0188
	AISI 316			47-0451-088-S



Rev

4